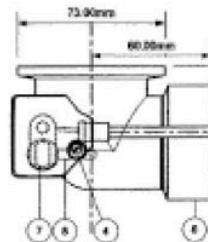
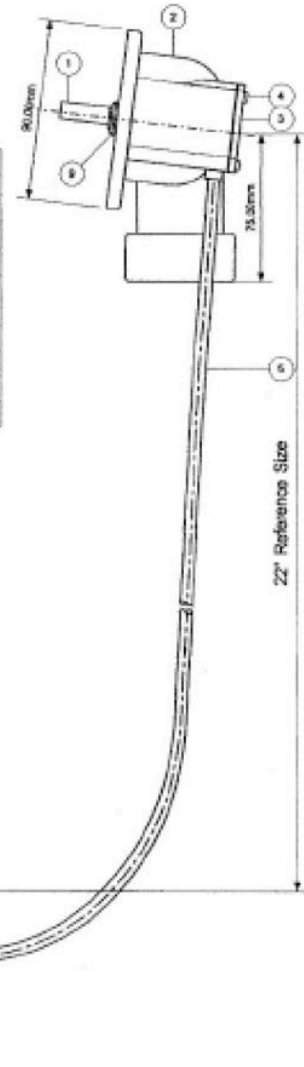


INSTALLATION DIMENSIONS

This model offers you the following features & benefits:

- Attractive and functional cable-drive bath waste and overflow.
- Available in 30 finishes
- Fits 23" - 27" depth tubs and whirlpools.
- Pipe not supplied
- For acrylic, fiberglass, cast iron and steel bathtubs and whirlpools.
- Cable length 39".
- IAPMO Listed.
- Meets CSA standard B125.
- Rigid control head
- Constructed of ABS plastic
- Fits 23"-27" depths.

Part No.	Name	Material
1	BR-CAM-OSB	C.P. Brass
2	PUW-ROSE-USA-W	PVC
3	PUW-ENDPLATE-USA	PVC
4	PUW-PWDSCREW	Stainless Steel
5	PUW-CABLE-0.7	Galvanized steel Inner Polypropylene outer
6	PUW-BODY-3H40	PVC
7	BR-CAMW-OSB	C.P. Brass
8	BR-LEV-OSB	C.P. Brass
9	ROBECAN-INS	C.P. Brass



Warranty

*ALL MOUNTAIN PRODUCTS CARRY A 1 YEAR WARRANTY ON ALL WORKING PARTS, (except disposers)

*MOST SPECIAL FINISHES HAVE A 1 YEAR WARRANTY IF INSTRUCTIONS ARE FOLLOWED PROPERLY. ORB, EB, MHB, WCP, AND TB HAVE A 90 DAY WARRANTY IF INSTRUCTIONS ARE FOLLOWED PROPERLY.

*ALL PVD FINISHES COME WITH A LIFETIME WARRANTY IF INSTRUCTIONS ARE FOLLOWED PROPERLY

*ALL XENYO COLORED PRODUCTS HAVE A LIFETIME WARRANTY

*USE OF PLUMBERS PUTTY ON PRODUCTS VOIDS WARRANTY

Specifications subject to change without notice.

© Mountain Plumbing Products

www.mountainplumbing.com

• Call Toll-Free 1.888.222.9140 Form MPP BWO40R45A2 2006