

## Section Contents

Duet Finishes - Sink Strainers **49 - 50**

Sink Strainers **51 - 54**

Waste Disposer Trims **55 - 59**

Waste Disposer Trim Parts **60**

Plastic Waste Disposer Trims **61**

Plastic Sink Strainers **61**

Air Gaps **62 - 63**

Sink Hole Cover **63**

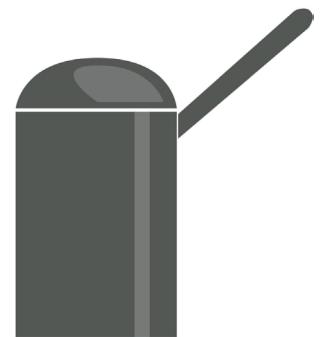
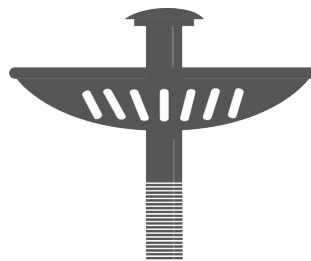
Soap/Lotion Dispensers **64 - 65**

## Fixture Planning Diagrams

Use the kitchen sink and bar/prep sink fixture planning diagram to simplify your product selection and complete your design.

Kitchen Sink Fixture Planning Diagram **24**

Bar/Prep Sink Fixture Planning Diagram **25**





# Sink Strainer Duet Finishes

Mountain Plumbing's Duet Finish Collection highlights elements of your kitchen and bath design to give a truly balanced and unique look.

Available on the MT300 Strainer, MT200EV Stopper & Strainer, and MT202 Stopper & Strainer  
Pages 51 & 55

## Ordering Duet Products

All Duet products come with Matte Black as the base finish. To order please use the following three step instructions:

1. Find the Product You Want in a Duet Finish			2. Select Accent Finish & Use Model # Below to Order			
Standard Model #	Product Name	Page	Brushed Nickel	Polished Chrome	Polished Nickel	Champagne Bronze
MT2000-2	Decorative Bottle Trap with Clean-Out Plug	236	MT2000-2D/BRN	MT2000-2D/CPB	MT2000-2D/PN	MT2000-2D/CHBRZ
MT5003L-NL	Lever Handle Angle Valve	156	MT5003L-NLD/BRN	MT5003L-NLD/CPB	MT5003L-NLD/PN	MT5003L-NLD/CHBRZ
MT300	Classic 3-1/2" Deluxe Stemball Kitchen Strainer	51	MT300D/BRN	MT300D/CPB	MT300D/PN	MT300D/CHBRZ
MT200EV	Complete Stopper & Strainer Unit Waste Disposer Trim	55	MT200EVD/BRN	MT200EVD/CPB	MT200EVD/PN	MT200EVD/CHBRZ
MT202	Extended Flange Stopper & Strainer Unit Waste Disposer Trim	55	MT202D/BRN	MT202D/CPB	MT202D/PN	MT202D/CHBRZ
MT957R	Round Deluxe Raised Air Switch with Freedom Mount	40	MT957RD/BRN	MT957RD/CPB	MT957RD/PN	MT957RD/CHBRZ
MT964K	Round Deluxe Knurled Raised Air Switch with Freedom Mount	42	MT964KD/BRN	MT964KD/CPB	MT964KD/PN	MT964KD/CHBRZ
MT1820-NL	Hot Water Faucet - Contemporary Round Body (120° Spout)	77	MT1820-NLD/PVDBRN	MT1820-NLD/CPB	MT1820-NLD/PVDPN	MT1820-NLD/CHBRZ
MT1830-NL	Hot Water Faucet - Contemporary Round Body (90° Spout)	79	MT1830-NLD/PVDBRN	MT1830-NLD/CPB	MT1830-NLD/PVDPN	MT1830-NLD/CHBRZ
MT1840-NL	Hot Water Faucet - Contemporary Round Body	81	MT1840-NLD/PVDBRN	MT1840-NLD/CPB	MT1840-NLD/PVDPN	MT1840-NLD/CHBRZ
MT1821-NL	Hot & Cold Faucet - Contemporary Round Body (120° Spout)	91	MT1821-NLD/PVDBRN	MT1821-NLD/CPB	MT1821-NLD/PVDPN	MT1821-NLD/CHBRZ
MT1831-NL	Hot & Cold Faucet - Contemporary Round Body (90° Spout)	93	MT1831-NLD/PVDBRN	MT1831-NLD/CPB	MT1831-NLD/PVDPN	MT1831-NLD/CHBRZ
MT1841-NL	Hot & Cold Faucet - Contemporary Round Body	95	MT1841-NLD/PVDBRN	MT1841-NLD/CPB	MT1841-NLD/PVDPN	MT1841-NLD/CHBRZ
MT1823-NL	Point-of-Use Faucet - Contemporary Round Body (120° Spout)	105	MT1823-NLD/PVDBRN	MT1823-NLD/CPB	MT1823-NLD/PVDPN	MT1823-NLD/CHBRZ
MT1833-NL	Point-of-Use Faucet - Contemporary Round Body (90° Spout)	107	MT1833-NLD/PVDBRN	MT1833-NLD/CPB	MT1833-NLD/PVDPN	MT1833-NLD/CHBRZ
MT1843-NL	Point-of-Use Faucet - Contemporary Round Body	109	MT1843-NLD/PVDBRN	MT1843-NLD/CPB	MT1843-NLD/PVDPN	MT1843-NLD/CHBRZ
<b>Products with Knurling</b>						
MT1820-NL	Hot Water Faucet - Contemporary Round Body (120° Spout)	77	MT1820-NLDK/PVDBRN	MT1820-NLDK/CPB	MT1820-NLDK/PVDPN	MT1820-NLDK/CHBRZ
MT1830-NL	Hot Water Faucet - Contemporary Round Body (90° Spout)	79	MT1830-NLDK/PVDBRN	MT1830-NLDK/CPB	MT1830-NLDK/PVDPN	MT1830-NLDK/CHBRZ
MT1840-NL	Hot Water Faucet - Contemporary Round Body	81	MT1840-NLDK/PVDBRN	MT1840-NLDK/CPB	MT1840-NLDK/PVDPN	MT1840-NLDK/CHBRZ
MT1821-NL	Hot & Cold Faucet - Contemporary Round Body (120° Spout)	91	MT1821-NLDK/PVDBRN	MT1821-NLDK/CPB	MT1821-NLDK/PVDPN	MT1821-NLDK/CHBRZ
MT1831-NL	Hot & Cold Faucet - Contemporary Round Body (90° Spout)	93	MT1831-NLDK/PVDBRN	MT1831-NLDK/CPB	MT1831-NLDK/PVDPN	MT1831-NLDK/CHBRZ
MT1841-NL	Hot & Cold Faucet - Contemporary Round Body	95	MT1841-NLDK/PVDBRN	MT1841-NLDK/CPB	MT1841-NLDK/PVDPN	MT1841-NLDK/CHBRZ
MT1823-NL	Point-of-Use Faucet - Contemporary Round Body (120° Spout)	105	MT1823-NLDK/PVDBRN	MT1823-NLDK/CPB	MT1823-NLDK/PVDPN	MT1823-NLDK/CHBRZ
MT1833-NL	Point-of-Use Faucet - Contemporary Round Body (90° Spout)	107	MT1833-NLDK/PVDBRN	MT1833-NLDK/CPB	MT1833-NLDK/PVDPN	MT1833-NLDK/CHBRZ
MT1843-NL	Point-of-Use Faucet - Contemporary Round Body	109	MT1843-NLDK/PVDBRN	MT1843-NLDK/CPB	MT1843-NLDK/PVDPN	MT1843-NLDK/CHBRZ

### 3a. Brushed Nickel - Find Prices & Order

Brushed Nickel	Price
MT2000-2D/BRN	\$ 627
MT5003L-NLD/BRN	\$ 284
MT300D/BRN	\$ 188
MT200EVD/BRN	\$ 192
MT202D/BRN	\$ 205
MT957RD/BRN	\$ 384
MT964KD/BRN	\$ 384
MT1820-NLD/PVDBRN	\$ 970
MT1830-NLD/PVDBRN	\$ 929
MT1840-NLD/PVDBRN	\$ 929
MT1821-NLD/PVDBRN	\$ 1229
MT1831-NLD/PVDBRN	\$ 1189
MT1841-NLD/PVDBRN	\$ 1189
MT1823-NLD/PVDBRN	\$ 756
MT1833-NLD/PVDBRN	\$ 737
MT1843-NLD/PVDBRN	\$ 737
<b>Products with Knurling</b>	
MT1820-NLDK/PVDBRN	\$ 1047
MT1830-NLDK/PVDBRN	\$ 1007
MT1840-NLDK/PVDBRN	\$ 1007
MT1821-NLDK/PVDBRN	\$ 1341
MT1831-NLDK/PVDBRN	\$ 1302
MT1841-NLDK/PVDBRN	\$ 1302
MT1823-NLDK/PVDBRN	\$ 816
MT1833-NLDK/PVDBRN	\$ 813
MT1843-NLDK/PVDBRN	\$ 813

### 3b. Polished Chrome - Find Prices & Order

Brushed Nickel	Price
MT2000-2D/CPB	\$ 627
MT5003L-NLD/CPB	\$ 284
MT300D/CPB	\$ 188
MT200EVD/CPB	\$ 192
MT202D/CPB	\$ 205
MT957RD/CPB	\$ 384
MT964KD/CPB	\$ 384
MT1820-NLD/CPB	\$ 970
MT1830-NLD/CPB	\$ 929
MT1840-NLD/CPB	\$ 929
MT1821-NLD/CPB	\$ 1229
MT1831-NLD/CPB	\$ 1189
MT1841-NLD/CPB	\$ 1189
MT1823-NLD/CPB	\$ 756
MT1833-NLD/CPB	\$ 737
MT1843-NLD/CPB	\$ 737
<b>Products with Knurling</b>	
MT1820-NLDK/CPB	\$ 1047
MT1830-NLDK/CPB	\$ 1007
MT1840-NLDK/CPB	\$ 1007
MT1821-NLDK/CPB	\$ 1341
MT1831-NLDK/CPB	\$ 1302
MT1841-NLDK/CPB	\$ 1302
MT1823-NLDK/CPB	\$ 816
MT1833-NLDK/CPB	\$ 813
MT1843-NLDK/CPB	\$ 813

### 3c. Polished Nickel - Find Prices & Order

Brushed Nickel	Price
MT2000-2D/PN	\$ 627
MT5003L-NLD/PN	\$ 284
MT300D/PN	\$ 188
MT200EVD/PN	\$ 192
MT202D/PN	\$ 205
MT957RD/PN	\$ 384
MT964KD/PN	\$ 384
MT1820-NLD/PVDPN	\$ 970
MT1830-NLD/PVDPN	\$ 929
MT1840-NLD/PVDPN	\$ 929
MT1821-NLD/PVDPN	\$ 1229
MT1831-NLD/PVDPN	\$ 1189
MT1841-NLD/PVDPN	\$ 1189
MT1823-NLD/PVDPN	\$ 756
MT1833-NLD/PVDPN	\$ 737
MT1843-NLD/PVDPN	\$ 737
<b>Products with Knurling</b>	
MT1820-NLDK/PVDPN	\$ 1047
MT1830-NLDK/PVDPN	\$ 1007
MT1840-NLDK/PVDPN	\$ 1007
MT1821-NLDK/PVDPN	\$ 1341
MT1831-NLDK/PVDPN	\$ 1302
MT1841-NLDK/PVDPN	\$ 1302
MT1823-NLDK/PVDPN	\$ 816
MT1833-NLDK/PVDPN	\$ 813
MT1843-NLDK/PVDPN	\$ 813

### 3d. Champagne Bronze - Find Prices & Order

Brushed Nickel	Price
MT2000-2D/CHBRZ	\$ 627
MT5003L-NLD/CHBRZ	\$ 284
MT300D/CHBRZ	\$ 188
MT200EVD/CHBRZ	\$ 192
MT202D/CHBRZ	\$ 205
MT957RD/CHBRZ	\$ 384
MT964KD/CHBRZ	\$ 384
MT1820-NLD/CHBRZ	\$ 970
MT1830-NLD/CHBRZ	\$ 929
MT1840-NLD/CHBRZ	\$ 929
MT1821-NLD/CHBRZ	\$ 1229
MT1831-NLD/CHBRZ	\$ 1189
MT1841-NLD/CHBRZ	\$ 1189
MT1823-NLD/CHBRZ	\$ 756
MT1833-NLD/CHBRZ	\$ 737
MT1843-NLD/CHBRZ	\$ 737
<b>Products with Knurling</b>	
MT1820-NLDK/CHBRZ	\$ 1047
MT1830-NLDK/CHBRZ	\$ 1007
MT1840-NLDK/CHBRZ	\$ 1007
MT1821-NLDK/CHBRZ	\$ 1341
MT1831-NLDK/CHBRZ	\$ 1302
MT1841-NLDK/CHBRZ	\$ 1302
MT1823-NLDK/CHBRZ	\$ 816
MT1833-NLDK/CHBRZ	\$ 813
MT1843-NLDK/CHBRZ	\$ 813



### Classic - 3-1/2" Deluxe Stemball Kitchen Sink Strainer

#### MT300

Stainless Steel Flange and Strainer features spring-loaded center post. Available in multiple finishes to match your kitchen and/or bar/prep sink fixtures.

- Stainless Steel Spring-Loaded Center Post
- Polypropylene body
- Fits standard sink drain openings that measure 3-1/2" to 4" in diameter
- Can fit sinks up to 1-3/16" thick. Sinks thicker than this will require BRBOLT/90 Extension Screw (shown below)

#### Standard Finishes

MT300/BRN	Brushed Nickel	\$ 131
MT300/BRS	Brushed Stainless	\$ 83
MT300/CHBRZ	Champagne Bronze	\$ 251
MT300/CPB	Polished Chrome	\$ 126
MT300/MB	Matte Black	\$ 180
MT300/ORB	Oil Rubbed Bronze	\$ 141
MT300/PN	Polished Nickel	\$ 131
MT300/PS	Polished Stainless Steel	\$ 55
MT300/PVDORB	PVD Oil Rubbed Bronze	\$ 188
MT300/VB	Venetian Bronze	\$ 141

#### Group 1 Finishes

All Group 1 Finishes \$ 180

#### Group 2 Finishes

All Group 2 Finishes \$ 251

#### Duet Finishes

(Matte Black is the Base Color for All Duet Products)

MT300D/BRN	Brushed Nickel	\$ 188
MT300D/CHBRZ	Champagne Bronze	\$ 188
MT300D/CPB	Polished Chrome	\$ 188
MT300D/PN	Polished Nickel	\$ 188

### 3-1/2" Deluxe Stemball Kitchen Sink Strainer - Basket Only

#### MT300BSK

Stainless Steel Strainer Basket features spring-loaded center post. Available in multiple finishes to match your kitchen and/or bar/prep sink fixtures.

- Stainless Steel Spring-Loaded Center Post
- This is the strainer basket only and does not include the flange.

#### Standard Finishes

MT300BSK/BRN	Brushed Nickel	\$ 37
MT300BSK/BRS	Brushed Stainless	\$ 37
MT300BSK/CPB	Polished Chrome	\$ 37
MT300BSK/ORB	Oil Rubbed Bronze	\$ 37
MT300BSK/PN	Polished Nickel	\$ 37
MT300BSK/PS	Polished Stainless	\$ 37
MT300BSK/VB	Venetian Bronze	\$ 37



### Extension Screw

#### BRBOLT/90

It measures 3.5" and is for the MT300, MT115, BWSTU, and BWSTUG.

\$ 21



### 3-1/2" Deluxe All Metal Kitchen Sink Strainer

#### MT303

Stainless Steel Flange, Strainer, and Body features spring-loaded center post. Available in multiple finishes to match your kitchen and/or bar/prep sink fixtures.

- Stainless Steel Spring-Loaded Center Post
- All Stainless Steel Body
- Fits standard sink drain openings that measure 3-1/2" to 4" in diameter

**\*NOTE: This item is not available in the "Brass" Finishes.**

#### Standard Finishes

MT303/BRN	Brushed Nickel	<b>\$ 179</b>
MT303/BRS	Brushed Stainless	<b>\$ 97</b>
MT303/CHBRZ	Champagne Bronze	<b>\$ 314</b>
MT303/CPB	Polished Chrome	<b>\$ 165</b>
MT303/MB	Matte Black	<b>\$ 228</b>
MT303/ORB	Oil Rubbed Bronze	<b>\$ 193</b>
MT303/PN	Polished Nickel	<b>\$ 179</b>
MT303/VB	Venetian Bronze	<b>\$ 193</b>

#### Group 1 Finishes

All Group 1 Finishes **\$ 228**

#### Group 2 Finishes

All Group 2 Finishes **\$ 314**

### Traditional - 3-1/2" Duo Basket Strainer for Kitchen Sink

#### MT8799

Stainless steel flange and strainer features a lift and lock stopper design that seals tightly. Available in multiple finishes to match your kitchen and/or bar/prep sink fixtures.

- Stainless steel drain body with brass locking ring and tail piece nut
- Can only fit sinks 7/8" thick
- Fits standard sink drain openings that measure 3-1/2" to 4" in diameter

#### Standard Finishes

MT8799/BRN	Brushed Nickel	<b>\$ 144</b>
MT8799/BRS	Brushed Stainless	<b>\$ 92</b>
MT8799/CHBRZ	Champagne Bronze	<b>\$ 204</b>
MT8799/CPB	Polished Chrome	<b>\$ 98</b>
MT8799/MB	Matte Black	<b>\$ 171</b>
MT8799/ORB	Oil Rubbed Bronze	<b>\$ 154</b>
MT8799/PN	Polished Nickel	<b>\$ 144</b>
MT8799/VB	Venetian Bronze	<b>\$ 154</b>

#### Group 1 Finishes

All Group 1 Finishes **\$ 171**

#### Group 2 Finishes

All Group 2 Finishes **\$ 204**

### Notes:




### Contemporary - 3-1/2" Deluxe Stemball Kitchen Sink Strainer

#### MT310

Stainless steel flange and strainer features a spring-loaded center post. Available in multiple finishes to match your kitchen and/or bar/prep sink fixtures.

- Stainless steel spring-loaded center post
- Stainless steel body with deep cup/long shank design allows for easy installation on both standard and thicker sinks: varying thicknesses from stainless steel sinks up to thicker granite or fireclay sinks
- Brass tail piece nut
- Fits standard sink drain openings that measure 3-1/2" to 4" in diameter

#### Standard Finishes

MT310/BRN	Brushed Nickel	<b>\$ 131</b>
MT310/BRS	Brushed Stainless	<b>\$ 83</b>
MT310/CHBRZ	Champagne Bronze	<b>\$ 246</b>
MT310/CPB	Polished Chrome	<b>\$ 126</b>
MT310/MB	Matte Black	<b>\$ 181</b>
MT310/ORB	Oil Rubbed Bronze	<b>\$ 141</b>
MT310/PN	Polished Nickel	<b>\$ 131</b>
MT310/VB	Venetian Bronze	<b>\$ 141</b>

#### Group 1 Finishes

All Group 1 Finishes **\$ 181**

#### Group 2 Finishes

All Group 2 Finishes **\$ 246**



### 3-in-1 - 3-1/2" Kitchen Sink Strainer with Stopper Lid and Lift-Out Basket

#### MT115

Stainless steel flange features a secure lid to stop water and a lift-out basket to collect waste. Available in multiple finishes to match your kitchen and/or bar/prep sink fixtures.

- Heavy duty stainless steel stopper lid
- Stainless steel lift-out basket which is plated to match
- Polypropylene body
- Can fit sinks up to 1-3/16" thick. Sinks thicker than this will require BRBOLT/90 Extension Screw (shown below)
- Fits standard sink drain openings that measure 3-1/2" to 4" in diameter

#### Standard Finishes

MT115/BRN	Brushed Nickel	<b>\$ 149</b>
MT115/BRS	Brushed Stainless	<b>\$ 138</b>
MT115/CHBRZ	Champagne Bronze	<b>\$ 242</b>
MT115/CPB	Polished Chrome	<b>\$ 124</b>
MT115/MB	Matte Black	<b>\$ 187</b>
MT115/ORB	Oil Rubbed Bronze	<b>\$ 170</b>
MT115/PN	Polished Nickel	<b>\$ 149</b>
MT115/VB	Venetian Bronze	<b>\$ 170</b>

#### Group 1 Finishes

All Group 1 Finishes **\$ 187**

#### Group 2 Finishes

All Group 2 Finishes **\$ 242**



### Extension Screw

#### BRBOLT/90

It measures 3.5" and is for the MT300, MT115, BWSTU, and BWSTUG.

**\$ 21**



### 2-1/2" Deluxe Stemball Bar Sink Strainer

#### MT700

A bar or prep sink strainer patterned after the popular MT300, the 2-1/2" Stainless Steel Flange and Strainer features spring-loaded center post. Available in multiple finishes to match your kitchen and/or bar/prep sink fixtures.

- Polypropylene Body
- Stainless Steel Spring-Loaded Center Post
- Fits a 2" Drain Opening

**\*NOTE: This item is not available in the "Brass" Finishes.**

#### Standard Finishes

MT700/BRN	Brushed Nickel	<b>\$ 112</b>
MT700/BRS	Brushed Stainless	<b>\$ 101</b>
MT700/CHBRZ	Champagne Bronze	<b>\$ 238</b>
MT700/CPB	Polished Chrome	<b>\$ 92</b>
MT700/MB	Matte Black	<b>\$ 170</b>
MT700/ORB	Oil Rubbed Bronze	<b>\$ 133</b>
MT700/PN	Polished Nickel	<b>\$ 112</b>
MT700/PS	Polished Stainless	<b>\$ 64</b>
MT700/PVDORB	PVD Oil Rubbed Bronze	<b>\$ 238</b>
MT700/VB	Venetian Bronze	<b>\$ 133</b>

#### Group 1 Finishes

All Group 1 Finishes **\$ 170**

#### Group 2 Finishes

All Group 2 Finishes **\$ 238**

### 2-1/2" Brass Bar/Prep Strainer with Lift-Out Basket

#### MT710

2-1/2" standard brass bar or food prep sink strainer. Available in multiple finishes to match your kitchen and/or bar/prep sink fixtures.

- Made of Brass
- 2" Deep Removeable Strainer Basket
- Fits a 2" Drain Opening

This generous 2" deep removable strainer basket catches any debris. Does not have sealing function to hold water in sink.

#### Standard Finishes

MT710/BRN	Brushed Nickel	<b>\$ 85</b>
MT710/CHBRZ	Champagne Bronze	<b>\$ 198</b>
MT710/CPB	Polished Chrome	<b>\$ 58</b>
MT710/MB	Matte Black	<b>\$ 154</b>
MT710/ORB	Oil Rubbed Bronze	<b>\$ 125</b>
MT710/PN	Polished Nickel	<b>\$ 85</b>
MT710/ULB	Unlacquered Brass	<b>\$ 58</b>
MT710/VB	Venetian Bronze	<b>\$ 125</b>

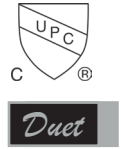
#### Group 1 Finishes

All Group 1 Finishes **\$ 154**

#### Group 2 Finishes

All Group 2 Finishes **\$ 198**

### Notes:

### Classic - Complete Stopper & Strainer Unit Waste Disposer Trim

#### MT200EV

Match your waste disposer trim to your kitchen décor! The MT200EV is a complete strainer with collar that is compatible with continuous feed models only.

This stopper/strainer unit works with the following waste disposer models:

- Insinkerator (ISE) - old & new models
- Kenmore
- Maytag
- Ace
- Jenn-Air
- Kitchen Aid
- Whirlpool
- Perfect Grind® 3-Bolt Mount
- For disposers with 3-3/8" I.D. and 3 bolt mounting

#### Standard Finishes

MT200EV/BRN	Brushed Nickel	<b>\$ 139</b>
MT200EV/BRS	Brushed Stainless	<b>\$ 89</b>
MT200EV/CHBRZ	Champagne Bronze	<b>\$ 260</b>
MT200EV/CPB	Polished Chrome	<b>\$ 133</b>
MT200EV/MB	Matte Black	<b>\$ 184</b>
MT200EV/ORB	Oil Rubbed Bronze	<b>\$ 146</b>
MT200EV/PN	Polished Nickel	<b>\$ 139</b>
MT200EV/PS	Polished Stainless	<b>\$ 87</b>
MT200EV/PVDORB	PVD Oil Rubbed Bronze	<b>\$ 260</b>
MT200EV/VB	Venetian Bronze	<b>\$ 146</b>

#### Group 1 Finishes

All Group 1 Finishes **\$ 184**

#### Group 2 Finishes

All Group 2 Finishes **\$ 260**

#### Duet Finishes

(Matte Black is the Base Color for All Duet Products)

MT200EVD/BRN	Brushed Nickel	<b>\$ 192</b>
MT200EVD/CHBRZ	Champagne Bronze	<b>\$ 192</b>
MT200EVD/CPB	Polished Chrome	<b>\$ 192</b>
MT200EVD/PN	Polished Nickel	<b>\$ 192</b>

### Classic - Complete Stopper & Strainer Unit Waste Disposer Trim - Extended Flange

#### MT202

Match your waste disposer trim to your kitchen décor! The MT202 is a complete strainer with collar that is compatible with continuous feed models only.

This stopper/strainer unit works with the same waste disposer models as the MT200EV:

Now matching waste disposer trim is available for use with your thicker fireclay sink.

- Disposer flange with extended throat for thicker sink installations
- Fits sinks up to 1-3/4" thick
- For disposer with 3-3/8" I.D. and 3 bolt mounting

#### Standard Finishes

MT202/BRN	Brushed Nickel	<b>\$ 150</b>
MT202/BRS	Brushed Stainless	<b>\$ 103</b>
MT202/CHBRZ	Champagne Bronze	<b>\$ 276</b>
MT202/CPB	Polished Chrome	<b>\$ 147</b>
MT202/MB	Matte Black	<b>\$ 196</b>
MT202/ORB	Oil Rubbed Bronze	<b>\$ 160</b>
MT202/PN	Polished Nickel	<b>\$ 150</b>
MT202/PS	Polished Stainless	<b>\$ 101</b>
MT202/PVDORB	PVD Oil Rubbed Bronze	<b>\$ 276</b>
MT202/VB	Venetian Bronze	<b>\$ 160</b>

#### Group 1 Finishes

All Group 1 Finishes **\$ 196**

#### Group 2 Finishes

All Group 2 Finishes **\$ 276**

#### Duet Finishes

(Matte Black is the Base Color for All Duet Products)

MT202D/BRN	Brushed Nickel	<b>\$ 205</b>
MT202D/CHBRZ	Champagne Bronze	<b>\$ 205</b>
MT202D/CPB	Polished Chrome	<b>\$ 205</b>
MT202D/PN	Polished Nickel	<b>\$ 205</b>





### Traditional - Complete Stopper & Strainer Unit Waste Disposer Trim - Extended Flange

#### MT7799EV

Match your waste disposer trim to your kitchen décor! The MT7799EV is a complete strainer with collar that is compatible with continuous feed models only. This basket stopper style is only available in the extended flange and may be installed on thinner sinks with the use of the 3 bolts provided.

This stopper/strainer unit works with the following waste disposer models:

- Kenmore
- Maytag
- Ace
- Jenn-Air
- Kitchen Aid
- Whirlpool
- Perfect Grind® 3-Bolt Mount
- For disposers with 3-3/8" I.D. and 3 bolt mounting
- Includes 3 bolts to be used when installing on thinner sinks

#### Standard Finishes

MT7799EV/BRN	Brushed Nickel	<b>\$ 150</b>
MT7799EV/BRS	Brushed Stainless	<b>\$ 103</b>
MT7799EV/CHBRZ	Champagne Bronze	<b>\$ 217</b>
MT7799EV/CPB	Polished Chrome	<b>\$ 110</b>
MT7799EV/MB	Matte Black	<b>\$ 183</b>
MT7799EV/ORB	Oil Rubbed Bronze	<b>\$ 160</b>
MT7799EV/PN	Polished Nickel	<b>\$ 150</b>
MT7799EV/VB	Venetian Bronze	<b>\$ 160</b>

#### Group 1 Finishes

All Group 1 Finishes	<b>\$ 183</b>
----------------------	---------------

#### Group 2 Finishes

All Group 2 Finishes	<b>\$ 217</b>
----------------------	---------------

### Contemporary - Complete Stopper & Strainer Unit Waste Disposer Trim

#### MT210EV

Match your waste disposer trim to your kitchen décor! The MT210EV is a complete strainer with collar that is compatible with continuous feed models only.

This stopper/strainer unit works with the following waste disposer models:

- Insinkerator (ISE) - old & new models
- Kenmore
- Maytag
- Ace
- Jenn-Air
- Kitchen Aid
- Whirlpool
- Perfect Grind® 3-Bolt Mount
- For disposers with 3-3/8" I.D. and 3 bolt mounting

#### Standard Finishes

MT210EV/BRN	Brushed Nickel	<b>\$ 139</b>
MT210EV/BRS	Brushed Stainless	<b>\$ 89</b>
MT210EV/CHBRZ	Champagne Bronze	<b>\$ 260</b>
MT210EV/CPB	Polished Chrome	<b>\$ 139</b>
MT210EV/MB	Matte Black	<b>\$ 191</b>
MT210EV/ORB	Oil Rubbed Bronze	<b>\$ 146</b>
MT210EV/PN	Polished Nickel	<b>\$ 139</b>
MT210EV/VB	Venetian Bronze	<b>\$ 146</b>

#### Group 1 Finishes

All Group 1 Finishes	<b>\$ 191</b>
----------------------	---------------

#### Group 2 Finishes

All Group 2 Finishes	<b>\$ 260</b>
----------------------	---------------



### Contemporary - Complete Stopper & Strainer Unit Waste Disposer Trim - Extended Flange

#### MT212EV

Match your waste disposer trim to your kitchen décor! The MT212EV is a complete strainer with collar that is compatible with continuous feed models only.

This stopper/strainer unit works with the same waste disposer models as MT210EV.

Now matching waste disposer trim is available for use with your thicker fireclay sink

- Disposer flange with extended throat for thicker sink installations
- Fits sinks up to 1-3/4" thick
- For disposer with 3-3/8" I.D. and 3 bolt mounting

#### Standard Finishes

MT212EV/BRN	Brushed Nickel	\$ 150
MT212EV/BRS	Brushed Stainless	\$ 102
MT212EV/CHBRZ	Champagne Bronze	\$ 291
MT212EV/CPB	Polished Chrome	\$ 143
MT212EV/MB	Matte Black	\$ 217
MT212EV/ORB	Oil Rubbed Bronze	\$ 160
MT212EV/PN	Polished Nickel	\$ 150
MT212EV/VB	Venetian Bronze	\$ 160

#### Group 1 Finishes

All Group 1 Finishes	\$ 217
----------------------	--------

#### Group 2 Finishes

All Group 2 Finishes	\$ 291
----------------------	--------

### Notes:




### Complete Stopper & Strainer Unit Waste Disposer Trim

#### MT120EV

Match your waste disposer trim to your kitchen décor! The MT120EV is a complete strainer with collar that is compatible with continuous feed models only. This model only comes with the stopper lid and disposer flange; lift-out basket is not included.

This stopper/strainer unit works with the following waste disposer models:

- Insinkerator (ISE) - old & new models
- Kenmore
- Maytag
- Ace
- Jenn-Air
- Kitchen Aid
- Whirlpool
- Perfect Grind® 3-Bolt Mount
- For disposers with 3-3/8" I.D. and 3 bolt mounting

**\*NOTE: This item is not available in the "Brass" Finishes.**

#### Standard Finishes

MT120EV/BRN	Brushed Nickel	<b>\$ 130</b>
MT120EV/BRS	Brushed Stainless	<b>\$ 118</b>
MT120EV/CHBRZ	Champagne Bronze	<b>\$ 214</b>
MT120EV/CPB	Polished Chrome	<b>\$ 103</b>
MT120EV/MB	Matte Black	<b>\$ 167</b>
MT120EV/ORB	Oil Rubbed Bronze	<b>\$ 149</b>
MT120EV/PN	Polished Nickel	<b>\$ 130</b>
MT120EV/VB	Venetian Bronze	<b>\$ 149</b>

#### Group 1 Finishes

All Group 1 Finishes **\$ 167**

#### Group 2 Finishes

All Group 2 Finishes **\$ 214**



### 3-in-1 Complete Stopper & Strainer Unit Waste Disposer Trim - Extended Flange

#### MT130

Match your waste disposer trim to your kitchen décor! The MT130 is a complete strainer with collar that is compatible with continuous feed models only. This stopper lid with lift-out basket style is only available in the extended flange and may be installed on thinner sinks with the use of the 3 bolts provided.

This stopper/strainer unit works with the following waste disposer models:

- Kenmore
- Maytag
- Ace
- Jenn-Air
- Kitchen Aid
- Whirlpool
- Perfect Grind® 3-Bolt Mount
- For disposers with 3-3/8" I.D. and 3 bolt mounting
- Includes 3 bolts to be used when installing on thinner sinks

#### Standard Finishes

MT130/BRN	Brushed Nickel	<b>\$ 145</b>
MT130/BRS	Brushed Stainless	<b>\$ 108</b>
MT130/CHBRZ	Champagne Bronze	<b>\$ 243</b>
MT130/CPB	Polished Chrome	<b>\$ 119</b>
MT130/MB	Matte Black	<b>\$ 182</b>
MT130/ORB	Oil Rubbed Bronze	<b>\$ 165</b>
MT130/PN	Polished Nickel	<b>\$ 145</b>
MT130/VB	Venetian Bronze	<b>\$ 165</b>

#### Group 1 Finishes

All Group 1 Finishes **\$ 182**

#### Group 2 Finishes

All Group 2 Finishes **\$ 243**



## Waste Disposer Trim Collar with Matching Stopper

### MT204

Match your waste disposer trim to your kitchen décor! The MT204 is a disposer collar and stopper that is compatible with continuous feed models only.



This collar and stopper works with the following waste disposer models:

- Insinkerator (ISE) - old & new models
- Kenmore
- Maytag
- Ace
- Jenn-Air
- Kitchen Aid
- Whirlpool
- Mountain Plumbing 3-Bolt Mount
- For disposer with 3-3/8" I.D. and 3 bolt mounting

#### Standard Finishes

MT204/BRN	Brushed Nickel	\$ 171
MT204/BRS	Brushed Stainless	\$ 148
MT204/CHBRZ	Champagne Bronze	\$ 352
MT204/CPB	Polished Chrome	\$ 147
MT204/MB	Matte Black	\$ 250
MT204/ORB	Oil Rubbed Bronze	\$ 207
MT204/PN	Polished Nickel	\$ 171
MT204/PS	Polished Stainless	\$ 131
MT204/PVDORB	PVD Oil Rubbed Bronze	\$ 352
MT204/VB	Venetian Bronze	\$ 207

#### Group 1 Finishes

All Group 1 Finishes	\$ 250
----------------------	--------

#### Group 2 Finishes

All Group 2 Finishes	\$ 352
----------------------	--------

## Notes:




### Waste Disposer Trim Collar

#### MT205

Match your waste disposer trim to your kitchen décor! The MT205 is a disposer collar that is compatible with continuous feed models only.

This collar works with the following waste disposer models:

- Insinkerator (ISE) - old & new models
- Kenmore
- Maytag
- Ace
- Jenn-Air
- Kitchen Aid
- Whirlpool
- Mountain Plumbing 3-Bolt Mount
- For disposer with 3-3/8" I.D. and 3 bolt mounting.

#### Standard Finishes

MT205/BRN	Brushed Nickel	<b>\$ 96</b>
MT205/BRS	Brushed Stainless	<b>\$ 76</b>
MT205/CHBRZ	Champagne Bronze	<b>\$ 182</b>
MT205/CPB	Polished Chrome	<b>\$ 92</b>
MT205/MB	Matte Black	<b>\$ 128</b>
MT205/ORB	Oil Rubbed Bronze	<b>\$ 112</b>
MT205/PN	Polished Nickel	<b>\$ 96</b>
MT205/PS	Polished Stainless	<b>\$ 76</b>
MT205/PVDORB	PVD Oil Rubbed Bronze	<b>\$ 182</b>
MT205/VB	Venetian Bronze	<b>\$ 112</b>

#### Group 1 Finishes

All Group 1 Finishes **\$ 128**

#### Group 2 Finishes

All Group 2 Finishes **\$ 182**

### Waste Disposer Replacement Stopper

#### BWDS6818

- A replacement stopper for your waste disposer flange
- For continuous feed waste disposers only
- Fits ISE, Waste King Disposer Units, and Mountain Plumbing 3-Bolt Mount
- Available in multiple finishes

#### Standard Finishes

BWDS6818/BRN	Brushed Nickel	<b>\$ 76</b>
BWDS6818/BRS	Brushed Stainless	<b>\$ 74</b>
BWDS6818/CHBRZ	Champagne Bronze	<b>\$ 170</b>
BWDS6818/CPB	Polished Chrome	<b>\$ 55</b>
BWDS6818/MB	Matte Black	<b>\$ 120</b>
BWDS6818/ORB	Oil Rubbed Bronze	<b>\$ 95</b>
BWDS6818/PN	Polished Nickel	<b>\$ 76</b>
BWDS6818/PS	Polished Stainless	<b>\$ 55</b>
BWDS6818/PVDORB	PVD Oil Rubbed Bronze	<b>\$ 170</b>
BWDS6818/VB	Venetian Bronze	<b>\$ 95</b>

#### Group 1 Finishes

All Group 1 Finishes **\$ 120**

#### Group 2 Finishes

All Group 2 Finishes **\$ 170**



### Plastic Molded Waste Disposer Trim Collar with Matching Stopper

#### BWDUF

Waste disposer trim in decorative colors to match your sink. Includes both flange trim and stopper-strainer. Will work with ISE Evolution disposer series and 3-Bolt Mount Disposers.

Unit is installed into existing flange and does not hold waste disposer.

#### Molded Plastic Finishes

BWDUF/IW	Ice White	\$ 48
BWDUF/MB	Matte Black	\$ 48
BWDUF/ORB	Oil Rubbed Bronze	\$ 48



### Decorative Plastic Garbage Disposer Flange with Stopper for Granite Sinks

#### BWDUFG

Waste disposer trim in multiple colors to match your granite sink. Includes both flange trim and stopper-strainer. Will work with ISE Evolution disposer series and 3-Bolt Mount Disposers.

Unit is installed into existing flange and does not hold waste disposer.

#### Molded Plastic Finishes

BWDUFG/DG	Dark Grey	\$ 78
BWDUFG/LG	Light Grey	\$ 78
BWDUFG/MLB	Matte Lava Black	\$ 78
BWDUFG/MW	Matte White	\$ 78



### Plastic Molded 3-1/2" Basket Strainer

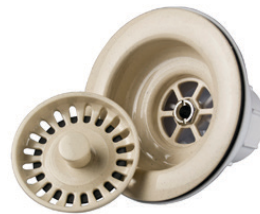
#### BWSTU

This plastic molded 3-1/2" basket strainer comes with a stainless steel spring-loaded center post. Comes in multiple colors to match the color of your sink.

Kitchen sink strainer installs from above the sink. Center threaded ferrule draws top and bottom flanges together and will seal water in sink. No need to reach "hard-to-find" nut under sink - it's easy to install!

#### Molded Plastic Finishes

BWSTU/IW	Ice White	\$ 48
BWSTU/MB	Matte Black	\$ 48
BWSTU/ORB	Oil Rubbed Bronze	\$ 48



### Decorative Plastic Universal Basket Strainer for Granite Sinks

#### BWSTUG

This plastic molded 3-1/2" basket strainer comes with a stainless steel spring-loaded center post. Comes in multiple colors to match the color of your sink.

Kitchen sink strainer installs from above the sink. Center threaded ferrule draws top and bottom flanges together and will seal water in sink. No need to reach "hard-to-find" nut under sink - it's easy to install!

#### Molded Plastic Finishes

BWSTUG/DG	Dark Grey	\$ 78
BWSTUG/LG	Light Grey	\$ 78
BWSTUG/MLB	Matte Lava Black	\$ 78
BWSTUG/MW	Matte White	\$ 78



### Round Air Gap Unit (cover & body)

#### MT400U

An air gap cover and body for dishwashers. Covers entire top of air gap body to eliminate any body show-through at the base!

- Dishwasher air gap with metal cover
- 1-3/8" hole required

Available in multiple finishes to match your kitchen fixtures.

#### Standard Finishes

MT400U/BRN	Brushed Nickel	<b>\$ 66</b>
MT400U/BRS	Brushed Stainless	<b>\$ 55</b>
MT400U/CHBRZ	Champagne Bronze	<b>\$ 118</b>
MT400U/CPB	Polished Chrome	<b>\$ 38</b>
MT400U/MB	Matte Black	<b>\$ 105</b>
MT400U/ORB	Oil Rubbed Bronze	<b>\$ 72</b>
MT400U/PN	Polished Nickel	<b>\$ 66</b>
MT400U/VB	Venetian Bronze	<b>\$ 72</b>

#### Group 1 Finishes

All Group 1 Finishes **\$ 105**

#### Group 2 Finishes

All Group 2 Finishes **\$ 118**



### Round Universal Air Gap Cover (cover only)

#### BAGCU

A universal cover for dishwasher air gaps. Covers entire top of air gap body to eliminate any body show-through at the base!

Available in multiple finishes to match your kitchen fixtures.

#### Standard Finishes

BAGCU/BRN	Brushed Nickel	<b>\$ 50</b>
BAGCU/BRS	Brushed Stainless	<b>\$ 39</b>
BAGCU/CHBRZ	Champagne Bronze	<b>\$ 102</b>
BAGCU/CPB	Polished Chrome	<b>\$ 22</b>
BAGCU/MB	Matte Black	<b>\$ 89</b>
BAGCU/ORB	Oil Rubbed Bronze	<b>\$ 57</b>
BAGCU/PN	Polished Nickel	<b>\$ 50</b>
BAGCU/VB	Venetian Bronze	<b>\$ 57</b>

#### Group 1 Finishes

All Group 1 Finishes **\$ 89**

#### Group 2 Finishes

All Group 2 Finishes **\$ 102**

### Notes:




### Square Air Gap Unit (cover & body)

#### MT500U

An air gap cover and body for dishwashers. Covers entire top of air gap body to eliminate any body show-through at the base!

- Dishwasher air gap with metal cover
- 1-3/8" hole required

Available in multiple finishes to match your kitchen fixtures.

#### Standard Finishes

MT500U/BRN	Brushed Nickel	<b>\$ 151</b>
MT500U/BRS	Brushed Stainless	<b>\$ 155</b>
MT500U/CHBRZ	Champagne Bronze	<b>\$ 206</b>
MT500U/CPB	Polished Chrome	<b>\$ 144</b>
MT500U/MB	Matte Black	<b>\$ 175</b>
MT500U/PN	Polished Nickel	<b>\$ 151</b>
MT500U/ULB	Unlacquered Brass	<b>\$ 144</b>

#### Group 1 Finishes

All Group 1 Finishes **\$ 175**

#### Group 2 Finishes

All Group 2 Finishes **\$ 206**



### Square Universal Air Gap Cover (cover only)



#### BAGCUSQ

A square universal cover for dishwasher air gaps. Covers entire top of air gap body to eliminate any body show-through at the base!

Available in multiple finishes to match your kitchen fixtures.

#### Standard Finishes

BAGCUSQ/BRN	Brushed Nickel	<b>\$ 135</b>
BAGCUSQ/BRS	Brushed Stainless	<b>\$ 140</b>
BAGCUSQ/CHBRZ	Champagne Bronze	<b>\$ 185</b>
BAGCUSQ/CPB	Polished Chrome	<b>\$ 128</b>
BAGCUSQ/MB	Matte Black	<b>\$ 158</b>
BAGCUSQ/PN	Polished Nickel	<b>\$ 135</b>
BAGCUSQ/ULB	Unlacquered Brass	<b>\$ 128</b>

#### Group 1 Finishes

All Group 1 Finishes **\$ 158**

#### Group 2 Finishes

All Group 2 Finishes **\$ 185**

### Sink Hole Cover

#### BTAPS50

- 2" Thread - a sink hole cover with a longer shank
- Fits 1-3/4" thick deck
- Multiple colors available to match your countertop

#### Standard Finishes

BTAPS50/BRN	Brushed Nickel	<b>\$ 22</b>
BTAPS50/BRS	Brushed Stainless Steel	<b>\$ 22</b>
BTAPS50/CHBRZ	Champagne Bronze	<b>\$ 35</b>
BTAPS50/MB	Matte Black	<b>\$ 26</b>
BTAPS50/SS	Stainless Steel	<b>\$ 18</b>

#### Group 1 Finishes

All Group 1 Finishes **\$ 26**

#### Group 2 Finishes

All Group 2 Finishes **\$ 35**

#### Other Finishes

BTAPS50/BL	Black	<b>\$ 17</b>
BTAPS50/BNE	Bone	<b>\$ 17</b>
BTAPS50/BT	Biscuit	<b>\$ 17</b>
BTAPS50/IW	Ice White	<b>\$ 17</b>
BTAPS50/PW	Polar White	<b>\$ 17</b>





### Soap/Lotion Dispenser - Phoenix Style

#### MT100

- Phoenix style deck-mount soap/lotion dispenser features a solid brass pump-head and flange
- 16 oz. reservoir bottle
- Soap dispenser easily refills from above the countertop
- 1-1/8" diameter hole required
- Lifetime warranty on all pump mechanisms

#### Standard Finishes

MT100/BRN	Brushed Nickel	\$ 141
MT100/CHBRZ	Champagne Bronze	\$ 258
MT100/CPB	Polished Chrome	\$ 128
MT100/MB	Matte Black	\$ 184
MT100/ORB	Oil Rubbed Bronze	\$ 151
MT100/PN	Polished Nickel	\$ 141
MT100/ULB	Unlacquered Brass	\$ 128
MT100/VB	Venetian Bronze	\$ 151

#### Group 1 Finishes

All Group 1 Finishes	\$ 184
----------------------	--------

#### Group 2 Finishes

All Group 2 Finishes	\$ 258
----------------------	--------

#### Other Finishes

MT100/BT	Biscuit	\$ 183
MT100/IW	Ice White	\$ 183
MT100/PW	Polar White	\$ 183



### Soap/Lotion Dispenser - Euro-Style

#### MT102

- Euro-style deck-mount soap/lotion dispenser features a solid brass pump-head and flange
- 16 oz. reservoir bottle
- Soap dispenser easily refills from above the countertop
- 1-1/8" diameter hole required
- Lifetime warranty on all pump mechanisms

#### Standard Finishes

MT102/BRN	Brushed Nickel	\$ 141
MT102/CHBRZ	Champagne Bronze	\$ 227
MT102/CPB	Polished Chrome	\$ 128
MT102/MB	Matte Black	\$ 201
MT102/ORB	Oil Rubbed Bronze	\$ 151
MT102/PN	Polished Nickel	\$ 141
MT102/SS	Stainless Steel	\$ 171
MT102/ULB	Unlacquered Brass	\$ 128
MT102/VB	Venetian Bronze	\$ 151

#### Group 1 Finishes

All Group 1 Finishes	\$ 201
----------------------	--------

#### Group 2 Finishes

All Group 2 Finishes	\$ 227
----------------------	--------



### Soap/Lotion Dispenser - Designers Series

#### MT105

- Designers Series deck-mount soap/lotion dispenser features a solid brass pump-head and flange
- 16 oz. reservoir bottle
- Soap dispenser easily refills from above the countertop
- 1-1/8" diameter hole required
- Lifetime warranty on all pump mechanisms

#### Standard Finishes

MT105/BRN	Brushed Nickel	\$ 122
MT105/CHBRZ	Champagne Bronze	\$ 183
MT105/CPB	Polished Chrome	\$ 113
MT105/MB	Matte Black	\$ 155
MT105/ORB	Oil Rubbed Bronze	\$ 151
MT105/PN	Polished Nickel	\$ 122
MT105/ULB	Unlacquered Brass	\$ 113
MT105/VB	Venetian Bronze	\$ 151

#### Group 1 Finishes

All Group 1 Finishes	\$ 155
----------------------	--------

#### Group 2 Finishes

All Group 2 Finishes	\$ 183
----------------------	--------



### Soap/Lotion Dispenser - Contemporary Square

#### MT106

- Contemporary Square deck-mount soap/lotion dispenser features a solid brass pump-head and flange
- 16 oz. reservoir bottle
- Soap dispenser easily refills from above the countertop
- 1-1/4" diameter hole required
- Lifetime warranty on all pump mechanisms

#### Standard Finishes

MT106/BRN	Brushed Nickel	\$ 301
MT106/CHBRZ	Champagne Bronze	\$ 448
MT106/CPB	Polished Chrome	\$ 260
MT106/MB	Matte Black	\$ 380
MT106/ORB	Oil Rubbed Bronze	\$ 356
MT106/PN	Polished Nickel	\$ 301
MT106/ULB	Unlacquered Brass	\$ 260
MT106/VB	Venetian Bronze	\$ 356

#### Group 1 Finishes

All Group 1 Finishes \$ 380

#### Group 2 Finishes

All Group 2 Finishes \$ 448



### Soap/Lotion Dispenser - Contemporary

#### MT125

- Contemporary deck-mount soap/lotion dispenser features a solid brass pump-head and flange
- 16 oz. reservoir bottle
- Soap dispenser easily refills from above the countertop
- 1-1/8" diameter hole required
- Lifetime warranty on all pump mechanisms

#### Standard Finishes

MT125/BRN	Brushed Nickel	\$ 137
MT125/BRS	Brushed Stainless	\$ 130
MT125/CHBRZ	Champagne Bronze	\$ 258
MT125/CPB	Polished Chrome	\$ 125
MT125/MB	Matte Black	\$ 184
MT125/ORB	Oil Rubbed Bronze	\$ 163
MT125/PN	Polished Nickel	\$ 137
MT125/ULB	Unlacquered Brass	\$ 125
MT125/VB	Venetian Bronze	\$ 163

#### Group 1 Finishes

All Group 1 Finishes \$ 184

#### Group 2 Finishes

All Group 2 Finishes \$ 258



### Soap/Lotion Dispenser - Traditional

#### MT127

- Traditional deck-mount soap/lotion dispenser features a solid brass pump-head and flange
- 16 oz. reservoir bottle
- Soap dispenser easily refills from above the countertop
- 1-1/8" diameter hole required
- Lifetime warranty on all pump mechanisms

#### Standard Finishes

MT127/BRN	Brushed Nickel	\$ 145
MT127/BRS	Brushed Stainless	\$ 137
MT127/CHBRZ	Champagne Bronze	\$ 266
MT127/CPB	Polished Chrome	\$ 130
MT127/MB	Matte Black	\$ 193
MT127/ORB	Oil Rubbed Bronze	\$ 171
MT127/PN	Polished Nickel	\$ 145
MT127/ULB	Unlacquered Brass	\$ 130
MT127/VB	Venetian Bronze	\$ 171

#### Group 1 Finishes

All Group 1 Finishes \$ 193

#### Group 2 Finishes

All Group 2 Finishes \$ 266